

## TOOTH WHITENING

POLA RAPID  
SUPER. FAST. WHITENING.

Pola Rapid is the new in office whitening treatment that safely whitens teeth in a 24 minute application time.

**SUPERIOR HANDLING AND FAST REMOVAL**

Pola Rapid's higher viscosity gel enables faster application and removal due to its specially formulated non-stick attributes. Pola Rapid can be extruded quickly and easily and remains on teeth when applied.

**ENHANCED BLUE GEL FOR FASTER APPLICATION**

Pola Rapid uses an advanced blue gel for ease of visibility and application. The easy to apply non-stick gel enables faster application and removal.

**MINIMAL CHAIR TIME WITH IMMEDIATE RESULTS**

A unique **38% hydrogen peroxide** formulation that releases active ingredients immediately. In only one visit, Pola Rapid initiates a powerful whitening treatment designed to whiten teeth in 24 minutes. No pre-desensitiser step is required.

POLA RAPID 3 PATIENT KIT	MRP \$442.37
POLA RAPID 3 PATIENT KIT WITH OPTRAGATE	MRP \$471.18
POLA RAPID 1 PATIENT KIT	MRP \$156.79
POLA RAPID 1 PATIENT KIT WITH OPTRAGATE	MRP \$167.75



## BUY 3 GET 1 FREE



**Dr Sam Koh**  
BDSc Melb (Hons)  
Melbourne, Australia

"I find Pola Rapid a beautiful, easy-to-use product. It is simple to apply and remove with its non-stick and enhanced blue gel formula. A great product to use by clinicians for in-chair whitening with minimal chair time and patient sensitivity, but reliable and immediate results.



# TOOTH WHITENING

# POLA

ADVANCED TOOTH WHITENING SYSTEM

## TAKE HOME WHITENING

**5+1\***  
BUY 5, GET 1 FREE

**10+3\***  
BUY 10, GET 3 FREE



### POLA DAY

HYDROGEN PEROXIDE BASED ADVANCED TRAY TOOTH WHITENING SYSTEM

- Available in **6%, 7.5%** and **9.5% hydrogen peroxide**
- High water content
- From 30 minutes once a day



### POLA NIGHT

CARBAMIDE PEROXIDE BASED ADVANCED TRAY TOOTH WHITENING SYSTEM

- Available in **10%, 16%, 18%** and **22% carbamide peroxide**
- High water content
- From 45 minutes once a day



### POLA FOR ALIGNERS

STRAIGHTEN AND BRIGHTEN TOGETHER

- Available in **10% carbamide peroxide**
- The greatest patient comfort in a whitening kit
- High viscosity gel ensures it can be easily and securely placed into the aligner tray, staying in place

POLA FOR ALIGNERS 4 X 3G MRP \$87.10



### POLA DAY CP

SUPER FAST TRAY TOOTH WHITENING SYSTEM

- Available in **35% carbamide peroxide**
- From just 15 minutes per day tray wear time
- Fluoride Releasing

POLA 4 X 1.3G MINI KIT MRP \$41.47  
POLA 10 X 1.3G SYRINGE KIT MRP \$101.57  
POLA 50 X 3G DISPENSER PACK MRP \$513.00



### SOOTHE

DESENSITISING GEL

- Available in **6% potassium nitrate** and **0.1% fluoride**
- Instant relief of sensitivity - use before or after whitening treatment

SOOTHE MINI KIT MRP \$38.75  
SOOTHE BULK KIT MRP \$446.06



### POLA LUMINATE

BRUSH ON & GO!

- No trays required - quick and easy professional brush on tooth whitener
- 6% hydrogen peroxide** low viscosity fast drying gel

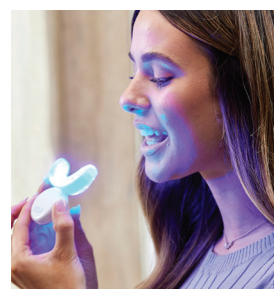
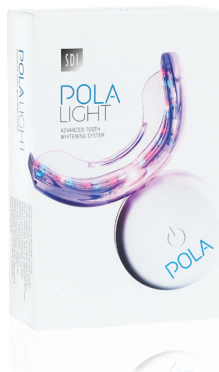
DENTIST PRICE MRP \$109.15  
RECOMMENDED PATIENT PRICE \$199.00

## ENJOY A BRIGHTER, MORE CONFIDENT SMILE IN 5 DAYS

- No custom trays required
- Reduced patient consult time
- Entry level whitening option
- Great front desk conversation starter

Now available in **6% and 9.5% hydrogen peroxide.**

DENTIST PRICE MRP \$109.15  
RECOMMENDED PATIENT PRICE \$199.00



# COMPOSITES

SPEND \$1500  
**GET 10% OFF**

SPEND \$2500  
**GET 20% OFF**

## UNIVERSAL COMPOSITES



DA  
2024  
PREFERRED  
PRODUCT

2022  
REALITY  
AWARD  
★★★★★

DA  
DENTAL ADVISOR  
★★★★★

13 CLINICAL EVALUATORS  
430 TOTAL USES  
93% CLINICAL RATING



### LUNA 2

Luna 2 is SDI's standout universal composite, with a unique blend of fillers to deliver outstanding optical and mechanical properties.

- Non-stick handling that maintains its sculpted shape
- Chameleon effect for accurate shade matching
- BPA free

LUNA 2 4g SYRINGE	MRP \$106.25
LUNA 2 20 X 0.25g COMPLETS	MRP \$137.96
LUNA 2 INTRO KIT	MRP \$516.86



### AURA EASY

Aura Easy is a universal composite available in 4 simplified shades to ensure easy restorations with reduced inventory.

- 4 shades cover 16 Vita® shades
- Non-stick and easy to sculpt
- Wear resistant with high strength

AURA EASY 4G SYRINGE	MRP \$111.19
AURA EASY 20 X 0.25G COMPLETS	MRP \$125.07



### AURA

Aura is a universal composite ideal for layering technique to help clinicians achieve maximum aesthetics with minimal effort.

- Dentine and enamel shades
- High polishability and gloss
- High-strength and wear resistance

AURA DENTINE 4g SYRINGE	MRP \$117.41
AURA DENTINE 20 X 0.25g COMPLETS	MRP \$132.09
AURA ENAMEL 3g SYRINGE	MRP \$90.86
AURA ENAMEL 20 X 0.20g COMPLETS	MRP \$110.08

## FLOWABLE COMPOSITES



### LUNA FLOW

Luna Flow is an extra strong flowable composite available in two viscosities that offer excellent mechanical and optical properties.

- Effortlessly flows to margins with thixotropic properties
- Excellent strength, radiopacity and wear resistance
- Accurate shade matching

LUNA FLOW/LV 2g SYRINGE	MRP \$53.12
LUNA FLOW/LV BULK KIT 5 X 2g SYR	MRP \$219.09
LUNA FLOW/LV INTRO KIT 4 X 2g SYR	MRP \$196.38

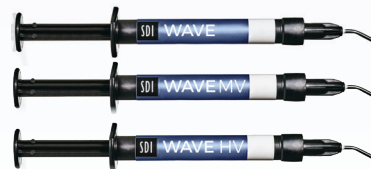


### AURA EASYFLOW

Aura Easyflow is a universal flowable composite available in 4 simplified shades with optimised features for every layer of use.

- 4 shades cover 16 Vita® shades
- Thixotropic for maximum control during application
- High flexural strength and radiopacity

AURA EASYFLOW 2g SYRINGE	MRP \$53.76
--------------------------	-------------



### WAVE

Wave is a universal flowable composite with proven mechanical properties that is available in three viscosities.

- Natural fluorescence
- Three viscosities

WAVE BULK KIT	MRP \$183.98
WAVE SYRINGE	MRP \$29.51

## SELF CURE COMPOSITES



### STELA

Stela is an innovative high-performance self-cure composite. Stela offers an unlimited depth of cure and low-stress polymerisation with a gap-free interface. There is no need to acid etch or light cure.

- Self-curing unlimited bulk fill
- Gap-free interface
- High bond strength
- Just two simple steps
- High strength

STELA AUTOMIX 1x 8g SYR REFILL	MRP \$191.26
STELA AUTOMIX INTRO KIT	MRP \$231.65
STELA CAPSULE REFILL 50 CAPS	MRP \$278.08
STELA CAPSULES INTRO KIT	MRP \$138.61
STELA PRIMER REFILL 5mL BT	MRP \$81.29

## BULK FILL COMPOSITES



### AURA BULK FILL

Aura Bulk Fill is a posterior composite with a natural looking finish available in just one universal shade for easy and quick restorations.

- 5mm depth of cure
- Non-stick, waxy consistency
- Low volumetric shrinkage

AURA BULK FILL 4g SYRINGE REFILLS	MRP \$111.83
AURA BULK FILL 20 X 0.25g COMPLETS	MRP \$125.80



# STELA

# THE FUTURE OF COMPOSITES



- ✓ Self-curing unlimited bulk fill
- ✓ Gap-free interface
- ✓ High bond strength
- ✓ Just two simple steps
- ✓ High strength



SCAN FOR INFORMATION ON STELA

## ACCESSORIES

### POINTS

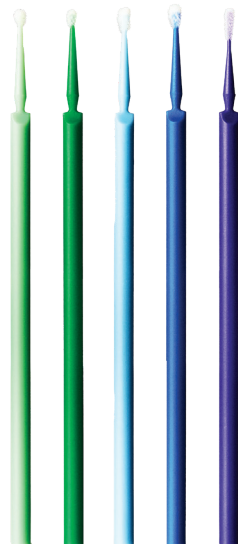
DISPOSABLE BRUSH APPLICATORS

- Points disposable brush applicators are used to quickly transfer small amounts of material into areas that are difficult to reach. Points are resistant to common solvents in dental materials.

BOX OF 400	MRP \$44.95
POINTS DISPENSER	MRP \$36.72



Points can be used either straight or bent



**BUY 10, GET 4 FREE**

## CEMENTS



### SET/SET PP

DUAL-CURED, SELF-ETCHING, SELF-ADHERING RESIN CEMENT

- Chemically bonds to tooth structure and substrates
- Available in capsules and a paste/paste automix syringe system (set PP)
- Fast and easy - etch, bond and fill with one component

SET 50 CAPSULES	MRP \$346.12
SET PP INTRO KIT	MRP \$271.67
SET PP REFILL	MRP \$179.74

**BUY 2, GET 1 FREE**



YOUR SMILE. OUR VISION.

Call 1800 337 003  
 fax 1800 005 602  
 info@sdi.com.au  
 www.sdi.com.au  
 www.polawhite.com.au



**New South Wales**  
 Hany Gobran 0418 210 341  
 Elli Mouhtouris 0400 849 017  
 Allison Ohlback 0400 305 512

**Western Australia**  
 Toni Doherty 0448 086 925

**South Australia/Northern Territory**  
 Andriana Spithas 0417 080 771

**Victoria**  
 Jo Coyle 0419 313 765  
 Snezana Josifoski 0418 567 758  
 Shelby MacDonald 0408 174 626

**Tasmania**  
 Snezana Josifoski 0418 567 758

**Queenland**  
 Natalie Johnson 0409 807 290  
 Dora Zanin 0428 910 805

\*Offers are valid 1st April - 30th April 2024. Offers cannot be combined. All prices include GST. All claims for free goods must be made within 30 days from the end of promotion date. Free goods will be of equal or lesser value. The above-mentioned offers are not applicable on corporate, government accounts or those customers who have received discounted pricing. Offers are valid in Australia only.